

1st March 2022

Kia ora koutou

I know there is a high level of anxiety as the case numbers keep growing in the community and we have more students and staff that are unwell or need to isolate due to being household contacts. The office is very busy with many parents calling with questions and uncertainty. The aim of this update is to answer some of these questions and inform you of our next steps.

### A move to Hybrid Learning

On Thursday 3rd March we are moving to Stage 2 (HYBRID Learning) of our COVID response plan. This means that we have students learning at school and a growing number learning from home. Our amazing staff are preparing for this stage and our aim is to keep learning as normal as possible.

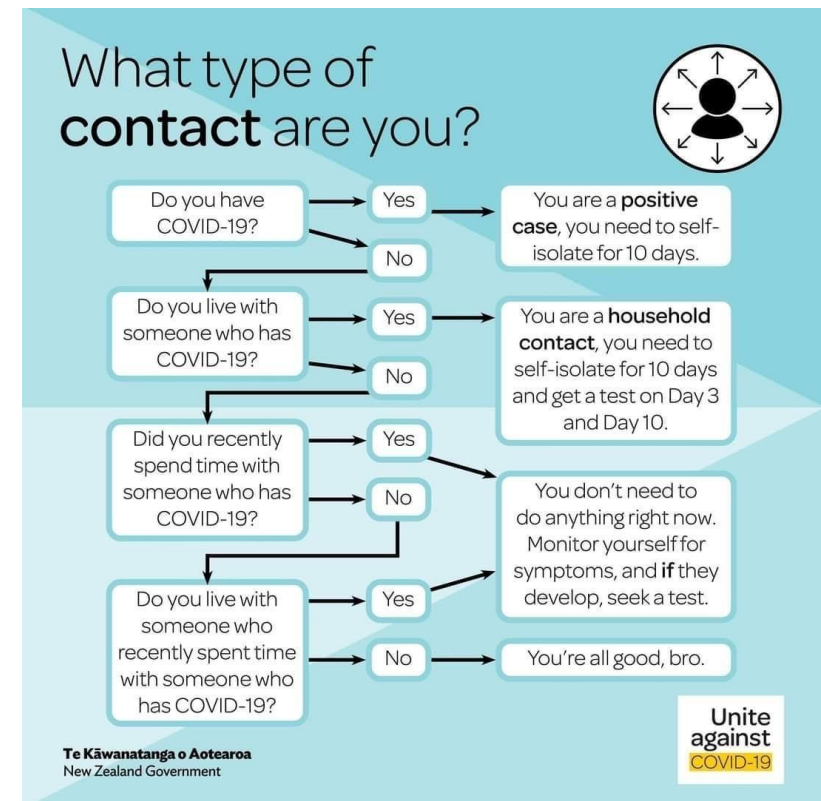
Your child's teacher will send an email to parents with details about the google classroom code and how the daily google meets (online meetings) will work. Teachers will give students a variety of learning activities that can be completed whether students are at home or at school. If you have any questions please email your child's classroom teacher. Unfortunately during Stage 2, we are unable to provide devices to students working at home. The devices are needed by students learning at school.

To help with your other questions, this update outlines the following:

- What type of contact are you and when do you need to be tested and isolate?
- How the school will operate if staff/students are away (Stage 1-4)
- Case Management
- FAQs - frequently asked questions
- For more information, go to the [COVID-19 Website](#)

Take care and stay safe.

Kind regards  
Mark Whitford  
Principal/Tumuaki



# COVID CASE MANAGEMENT PROTOCOLS

As we navigate the Phase 3 of the Covid-19 Omicron outbreak, there are cases in our Glenfield Intermediate School community. Communication with our school community, is guided by Public Health and the Ministry of Education. Planning for the possibility of absent staff and/or students is complex and will require flexibility and patience from everyone involved in and around our school. The information on this page is a step by step guide of what to do for your child and who to notify as cases continue to emerge.

GIS response to the Omicron outbreak will happen in four stages depending on case numbers at school and in the community.

## STAGE 1

School is open with all students learning on-site.

## STAGE 2

School is open with some students on-site and some students learning from home.

## STAGE 3

School is open but the school site is closed. Distance learning programmes are in place.

## STAGE 4

School is closed with no learning programmes available due to staff illness.

**Your child tests positive for Covid-19**

Contact the school as soon as possible.

Self isolate for 10 days.

Your child can return to school on day 11 if no symptoms.

**A household whānau member tests positive for Covid-19**

Contact the school as soon as possible. Your child is a household contact

Isolate for 10 days, monitor for symptoms, and get a test on day 3 and day 10

Your child can return to school on day 11 if no symptoms.

**Your child is a close contact of a positive case not in their house**

Inform the school

Your child can continue to attend school

Monitor your child for any symptoms and get tested if unwell. You child can return to school after a negative test.

**A household whānau member is a close contact of a positive case**

Inform the school

Your child can continue to attend school

Monitor your child for any symptoms and get tested if unwell. You child can return to school after a negative test.

# PHASE 3 FREQUENTLY ASKED QUESTIONS

Q

Who do we advise if our child tests positive for Covid-19?

A

During school day - contact the school office on 444 6582 or office@glenfieldint.school.nz  
Outside of school hours: email the Principal Mark Whitford mwhitford@glenfieldint.school.nz

Q

My child has tested positive for Covid-19. What does this mean?

A

- Your child (and everyone living in your house) will need to self-isolate for 10 days
- Testing will happen on Day 3 and Day 10 for all **household contacts**
- **If your child has been at school while infectious**, we will anonymously notify wider school community of a case to encourage whānau to watch for symptoms.

Q

My child is a close contact of someone living in our household. What does this mean?

A

In Phase 3, being a **household contact** means your child (along with all those living in your house) must self-isolate for ten days. Testing will happen on Day 3 and Day 10. Your child can stop isolating and return to school after a negative Day 10 test.

Q

My child is a close contact of a case not associated with our household. (This may be in school or out of school.) Can they still come to school?

A

**Your child can come to school.** Anyone who is a close contact of a non-household member does not need to self-isolate.  
**This includes when there is a positive case in your child's class.** You just need to watch for symptoms.  
Self-isolate and get tested should symptoms develop.

Q

My child is self-isolating. What school-work will be available?

A

Our support and response will also depend on whether class teachers are also isolating at home. If our teachers are also isolating, they will be in touch to offer our Distance Learning programme (virtual connections, activities etc). All students have been made aware of google classroom, Seesaw and their google accounts if they are required to move to Distance Learning. The school also has hard copy packs available if requested.